



The Bayview Model

Presented by
Woodland Custom Homes

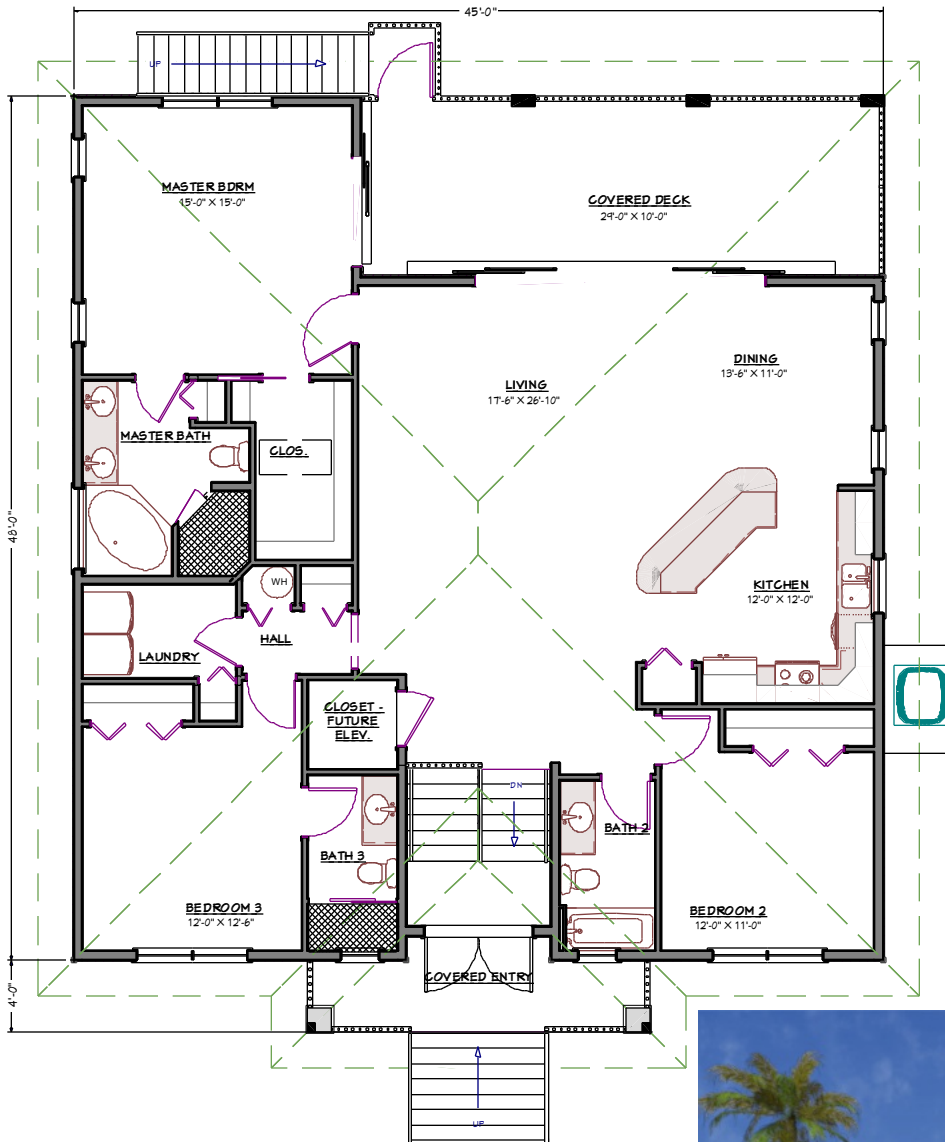
1919 Courtney Drive, Suite 1A
Ft. Myers, Fl. 33901
Ph (239)939-9242 Fax (239)939-9240

The Bayview - 3 Bedroom, 3 Bath

Living area	1852 S.F.
Screened Deck	290
Covered Entry	89
Total Raised Area	2231 S.F.

STANDARD FEATURES

- 8'4" TALL FULL MASONRY ENCLOSURE WITH STUCCO EXTERIOR.
- CONCRETE ENTRY STAIRS FINISHED WITH PORCELAIN TILE.
- FINISHED ENTRY FROM BELOW WITH INTERIOR STAIRS.
- 9'4" TALL, 2X6 EXTERIOR WALLS.
- VAULTED CEILINGS IN THE KITCHEN, DINING AND LIVING ROOM.
- EXTERIOR WALLS, HARDIE SIDING OR STUCCO.
- IMPACT GLASS WINDOWS AND DOORS.
- 5V 26 GAUGE METAL ROOF, WITH PEEL AND STICK UNDERLAYMENT.
- 8' TALL SOLID CORE INTERIOR DOORS, 5 1/4" BASE, 3 1/4" CASING.
- PORCELAIN WALL TILE SHOWERS AND SOAKING TUB IN THE MASTER BATHROOM.
- CUSTOM BUILT CABINETS WITH WOOD DOORS.
- LEVEL 3 GRANITE IN KITCHEN AND ALL BATHROOMS.
- PORCELAIN FLOOR TILE THROUGHOUT, INCLUDING EXTERIOR DECKS.
- \$5,000.00 APPLIANCE ALLOWANCE.
- \$4,500.00 FAN AND FIXTURE ALLOWANCE.
- SCREENED REAR PORCH.



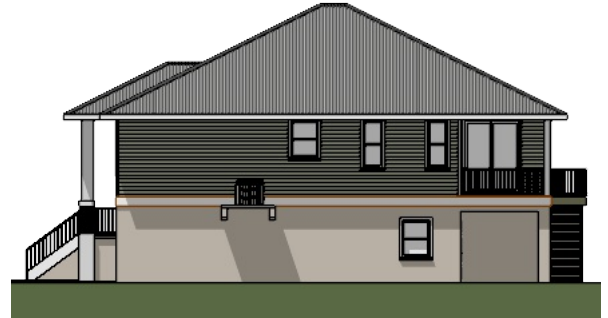
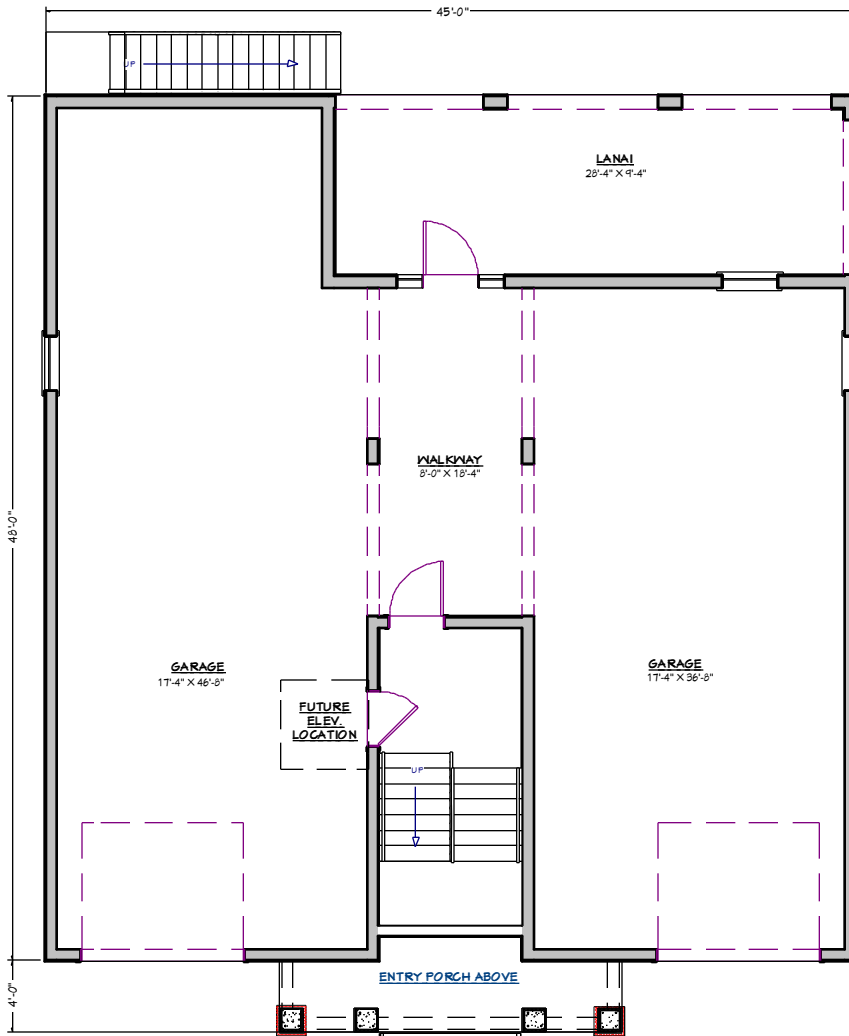
The information shown on this brochure is subject to change without notice. All effort has been made to update brochures in a timely manor. Final specifications and details should be obtained from construction documents and contract.



The Bayview Model

Presented by
Woodland Custom Homes

1919 Courtney Drive, Suite 1A
Ft. Myers, Fl. 33901
Ph (239)939-9242 Fax (239)939-9240



The information shown on this brochure is subject to change without notice. All effort has been made to update brochures in a timely manor. Final specifications and details should be obtained from construction documents and contract.